



## IMLAN

19" WALL-MOUNTED RACK WITH  
REMOVABLE SIDE PANELS



# IMLAN

## Technical specification

### DIMENSIONS

Internal Height	6U / 9U / 12U / 15U / 22U
Full Height	324 / 458 / 591 / 724 / 1035 mm
Depth	400 / 500 / 600 mm
Width	600 mm
Weight	From 15 Kg to 28 Kg, according to the dimensions
Load capacity	80 Kg

### FINISHING

Colour	 Anthracite RAL 7016 Front door, rear panel and side panels, frame and 19" panel mounts	 Custom colours on demand
--------	---	---

### MATERIALS SPECIFICATIONS

Frame	Steel 1.2 mm
Panel mount angles	Steel 2.0 mm
Side panels	Steel 1.0 mm
Rear panels	Steel 1.5 mm
Doors	Metal trim steel 1.0 mm
Glass	Tempered 4.0 mm UNI EN1250.1

### STANDARDS

IEC 60297	Dimension of mechanical structures of the 19" equipment
DIN 41494	Basic specification for 19" construction systems
EN 60950	European safety standards for information technology equipment
VDE0100	Installation and set-up of current system and grounding
DIN-1249-11	Glass building; glass edges

# IMLAN

## Introduction

### INTRODUCTION TO IMLAN

IMLAN is a wall mounted cabling enclosure range available in three different depths, designed specifically for installers of data and telecommunications equipment. IMLAN wall-mounted cabling enclosure provides total all around cable access and protects data cables and patch cords. IMLAN can be supplied with or without side panels, allowing enclosures to be added without the need of additional accessories. Two separate codes are available.

The possibility of removing the side panels, only with the front door open or removed, allows simple and neat cross patching behind the door and additional safety.

Removable side panels provide 360° access for easy cable installation. Cables can be laid through the top and base gland plates providing supplementary cable access. In addition, there is a full range of IMLAN cable management accessories. There is a blue plastic non-flammable snap in cable hook designed to help cables flow smoothly over surfaces thus preventing cable damage. The positioning of the front 19" panel mounts provides easy cable access both on the front and the rear.

### KEY FEATURES

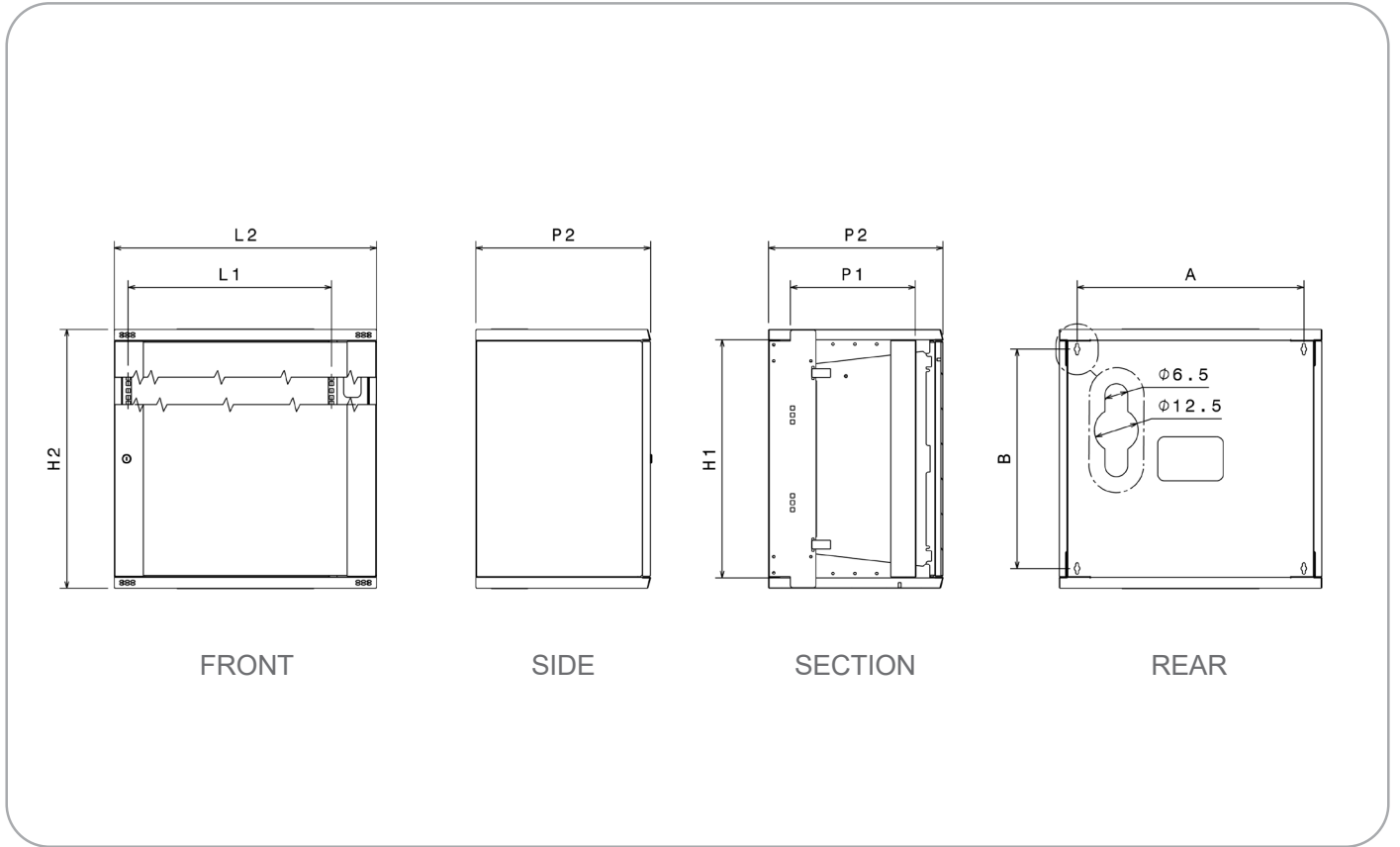
- 5 height options: 6U, 9U, 12U, 15U, 22U
- 3 depth options: 400 mm, 500 mm, 600 mm
- Load capacity: 80 Kg
- Removable side panels
- 360° optimised cable access
- Allows enclosures to be added without the need of additional accessories
- Ready configured cabinet
- Reversible lockable glass and steel doors
- User and cable friendly design
- Functional and aesthetically elegant outlook
- Instructions for installation and mounting included
- Large selection of accessories for specific application
- Pre-punched fan patterns on top and base covered by clip-in blanks provide ventilation options



IMLAN - Standard version

# IMLAN

## Technical specifications



Rack Dimensions	Height		Width		Depth		Fixing holes wall-mounted	
	H1	H2 (mm)	L1	L2 (mm)	P1 (mm)	P2 (mm)	A (mm)	B (mm)
6U 600 x 400	6U	324	19"	600	300	400	518	233
6U 600 x 500	6U	324	19"	600	400	500	518	233
6U 600 x 600	6U	324	19"	600	500	600	518	233
9U 600 x 400	9U	458	19"	600	300	400	518	367
9U 600 x 500	9U	458	19"	600	400	500	518	367
9U 600 x 600	9U	458	19"	600	500	600	518	367
12U 600 x 400	12U	591	19"	600	300	400	518	500
12U 600 x 500	12U	591	19"	600	400	500	518	500
12U 600 x 600	12U	591	19"	600	500	600	518	500
15U 600 x 400	15U	724	19"	600	300	400	518	634
15U 600 x 500	15U	724	19"	600	400	500	518	634
15U 600 x 600	15U	724	19"	600	500	600	518	634
22U 600 x 400	22U	1035	19"	600	300	400	518	945
22U 600 x 500	22U	1035	19"	600	400	500	518	945
22U 600 x 600	22U	1035	19"	600	500	600	518	945

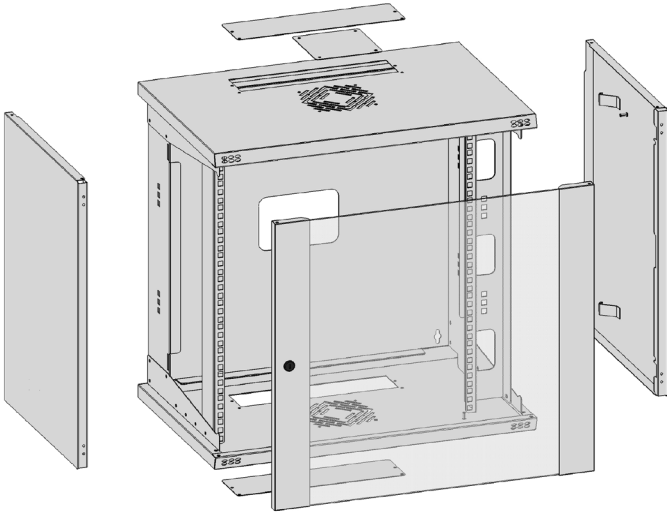
# IMLAN Primary cabinet

## “PRIMARY” CABINET READY TO USE

IMLAN “Primary” Kit is a ready to use configured cabinet designed for your convenience. One order code gives you a complete “Primary” cabinet and can be used as a base cabinet to be completed by adding various accessories.

## CONTENTS OF KIT

Description	Qty	Finishes
Top cover	1	Anthracite RAL 7016
Bottom cover	1	Anthracite RAL 7016
Grand plates	2	Anthracite RAL 7016
Side panels	2	Anthracite RAL 7016
Rear panel	1	Anthracite RAL 7016
Glass or metal door	1	Anthracite RAL 7016
19" panel mounts	2	Anthracite RAL 7016
Fixings and drilling		



IMLAN PRIMARY CABINET

## CONTENTS OF KIT - ADDITIONAL BAY

Description	Qty	Finishes
Top cover	1	Anthracite RAL 7016
Bottom cover	1	Anthracite RAL 7016
Grand plates	2	Anthracite RAL 7016
Rear panel	1	Anthracite RAL 7016
Glass or metal door	1	Anthracite RAL 7016
19" panel mounts	2	Anthracite RAL 7016
Fixings		

## CONTENTS OF THE KIT

4 x [Screw]

4 x [Nut]

4 x [Washer]

4 x [Spacer]

Fixings

2 x Top / Bottom cover

1 x Rear panel

1 x Front door

1 x Right-hand Panel mount

1 x Left-hand Panel mount

2 x Grand plates

1 x Drilling template

2 x Side panels

# IMLAN

## Ordering informations

### IMLAN PRIMARY KIT FRONT GLASS DOOR

IMLAN Primary kit with front glass door and rear metal panel.

Dimensions	Weight	Order code
6U 600x400 mm	11 Kg	<a href="#">VT944-000001</a>
6U 600x500 mm	13 Kg	<a href="#">VT944-000006</a>
6U 600x600 mm	15 Kg	<a href="#">VT944-000011</a>
9U 600x400 mm	15.2 Kg	<a href="#">VT944-000002</a>
9U 600x500 mm	17.4 Kg	<a href="#">VT944-000007</a>
9U 600x600 mm	19.6 Kg	<a href="#">VT944-000012</a>
12U 600x400 mm	19.3 Kg	<a href="#">VT944-000003</a>
12U 600x500 mm	21.7 Kg	<a href="#">VT944-000008</a>
12U 600x600 mm	24.1 Kg	<a href="#">VT944-000013</a>
15U 600x400 mm	23.5 Kg	<a href="#">VT944-000004</a>
15U 600x500 mm	26 Kg	<a href="#">VT944-000009</a>
15U 600x600 mm	28.5 Kg	<a href="#">VT944-000014</a>
22U 600x400 mm	33 Kg	<a href="#">VT944-000005</a>
22U 600x500 mm	36 Kg	<a href="#">VT944-000010</a>
22U 600x600 mm	39 Kg	<a href="#">VT944-000015</a>

IMLAN Primary additional bay (without side panels)

Dimensions	Weight	Order code
6U 600x400 mm	8.9 Kg	<a href="#">VT944-000077</a>
6U 600x500 mm	10.4 Kg	<a href="#">VT944-000082</a>
6U 600x600 mm	12 Kg	<a href="#">VT944-000087</a>
9U 600x400 mm	12.2 Kg	<a href="#">VT944-000078</a>
9U 600x500 mm	13.7 Kg	<a href="#">VT944-000083</a>
9U 600x600 mm	15.2 Kg	<a href="#">VT944-000088</a>
12U 600x400 mm	15.4 Kg	<a href="#">VT944-000079</a>
12U 600x500 mm	16.9 Kg	<a href="#">VT944-000084</a>
12U 600x600 mm	18.4 Kg	<a href="#">VT944-000089</a>
15U 600x400 mm	18.7 Kg	<a href="#">VT944-000080</a>
15U 600x500 mm	20 Kg	<a href="#">VT944-000085</a>
15U 600x600 mm	21.4 Kg	<a href="#">VT944-000090</a>
22U 600x400 mm	26 Kg	<a href="#">VT944-000081</a>
22U 600x500 mm	27.4 Kg	<a href="#">VT944-000086</a>
22U 600x600 mm	28.8 Kg	<a href="#">VT944-000091</a>



IMLAN - Primary Kit  
Front glass door

### IMLAN PRIMARY KIT FRONT METAL DOOR

IMLAN Primary kit with front metal door and rear metal panel.

Dimensions	Weight	Order code
6U 600x400 mm	11 Kg	<a href="#">VT944-000016</a>
6U 600x500 mm	13 Kg	<a href="#">VT944-000021</a>
6U 600x600 mm	15 Kg	<a href="#">VT944-000026</a>
9U 600x400 mm	15.2 Kg	<a href="#">VT944-000017</a>
9U 600x500 mm	17.4 Kg	<a href="#">VT944-000022</a>
9U 600x600 mm	19.6 Kg	<a href="#">VT944-000027</a>
12U 600x400 mm	19.3 Kg	<a href="#">VT944-000018</a>
12U 600x500 mm	21.7 Kg	<a href="#">VT944-000023</a>
12U 600x600 mm	24.1 Kg	<a href="#">VT944-000028</a>
15U 600x400 mm	23.5 Kg	<a href="#">VT944-000019</a>
15U 600x500 mm	26 Kg	<a href="#">VT944-000024</a>
15U 600x600 mm	28.5 Kg	<a href="#">VT944-000029</a>
22U 600x400 mm	33 Kg	<a href="#">VT944-000020</a>
22U 600x500 mm	36 Kg	<a href="#">VT944-000025</a>
22U 600x600 mm	39 Kg	<a href="#">VT944-000030</a>

IMLAN Primary additional bay (without side panels)

Dimensions	Weight	Order code
6U 600x400 mm	8.9 Kg	<a href="#">VT944-000092</a>
6U 600x500 mm	10.4 Kg	<a href="#">VT944-000097</a>
6U 600x600 mm	12 Kg	<a href="#">VT944-000102</a>
9U 600x400 mm	12.2 Kg	<a href="#">VT944-000093</a>
9U 600x500 mm	13.7 Kg	<a href="#">VT944-000098</a>
9U 600x600 mm	15.2 Kg	<a href="#">VT944-000103</a>
12U 600x400 mm	15.4 Kg	<a href="#">VT944-000094</a>
12U 600x500 mm	16.9 Kg	<a href="#">VT944-000099</a>
12U 600x600 mm	18.4 Kg	<a href="#">VT944-000104</a>
15U 600x400 mm	18.7 Kg	<a href="#">VT944-000095</a>
15U 600x500 mm	20 Kg	<a href="#">VT944-000100</a>
15U 600x600 mm	21.4 Kg	<a href="#">VT944-000105</a>
22U 600x400 mm	26 Kg	<a href="#">VT944-000096</a>
22U 600x500 mm	27.4 Kg	<a href="#">VT944-000101</a>
22U 600x600 mm	28.8 Kg	<a href="#">VT944-000106</a>



IMLAN - Primary Kit  
Front metal door

# IMLAN B-Side Introduction

## IMLAN B-SIDE

IMLAN B-side is the latest and innovative new product in wall mounted applications. On this short depth wall box is possible to mount active equipments and patch panels or 19" accessories together. IMLAN B-Side, through the 6U additional vertical 19" panel mounts on each side, allows to install further 500 mm deep equipments in the side vertical position of a cabinet, which is only 300 mm deep.

IMLAN B-Side can be supplied in open frame version.

The possibility of removing the side panels, only with the front door open or removed, allows for simple cross patching behind the door and offers additional safety.

Removable side panels provide 360° access for easy cable installation. Cables can be laid through the top and base gland plates providing supplementary cable access. In addition, there is a full range of IMLAN cable management accessories. There is a blue plastic non-flammable snap in cable hook designed to help cables flow smoothly over surfaces thus preventing cable damage. The positioning of the front 19" panel mounts provides easy cable access both on the front and the rear.

## KEY FEATURES

- 12U verticals + 6U usable side
- Depth 300 mm
- Load capacity: 80 Kg
- Removable side panels
- 360° optimised cable access
- Reversible lockable glass and steel doors
- User and cable friendly design
- Compatible with all accessories of IMLAN standard range
- Pre-punched fan patterns in top and base covered by clip-in blanks provide ventilation options.

## CONTENTS OF KIT

Description	Qty
Top cover	1
Bottom Cover	1
Grand plates	2
Side panels	2
Rear panel	1
Glass door	1
19" panel mounts	2
Fixings	

## ORDERING INFORMATION

Height	M.O.Q.	Order code
12U + 6U x 300 mm Wallmount cabinet	1	<a href="#">VT944-750007</a>



IMLAN B-Side - Front view



IMLAN B-Side - Side view



IMLAN B-Side - Internal view of the frame with vertical 19"

# IMLAN Accessories

## THERMAL KIT

Description	Order code
Thermal kit	<a href="#">VK548-598652</a>



Thermal kit

## BRUSHED CABLE ENTRY PANEL KIT

Description	Order code
Cable entry panel with brush	<a href="#">VA937-598663</a>



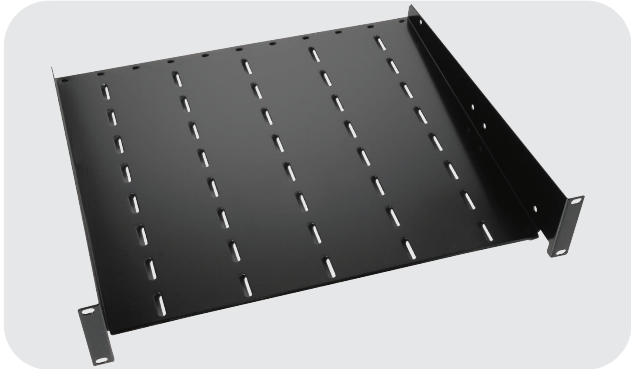
Brushed cable entry panel

## 19" CANTILEVER SHELF KIT

Description	Order code
255 mm deep 19" cantilever shelf	<a href="#">VK593-599790</a>
400 mm deep 19" cantilever shelf	<a href="#">VK593-599791</a>

## EARTH CONTINUITY KIT

Description	Order code
Earth continuity kit	<a href="#">VK944-000167</a>
1U 19" copper earthing bar kit with isolators	<a href="#">VT555-500515</a>



Sliding shelves kit



1U 19" copper earthing bar kit with isolators



Earth continuity kit



# IMLAN Accessories

## SINGLE AND DOUBLE CABLE HOOPS KIT

Description	Order code
Double metal cable hoops kit of 10 pcs	<a href="#">VK385-775723</a>
Single plastic cable hoops kit of 10 pcs	<a href="#">VK385-776232</a>

## CABLE MANAGEMENT PANELS KIT

Description	Order code
1U 19" cable management panel w/metal hoops	<a href="#">VK385-776196</a>
1U 19" cable management panel w/plastic hops	<a href="#">VK385-776229</a>

## CAGED NUTS AND FIXINGS KIT

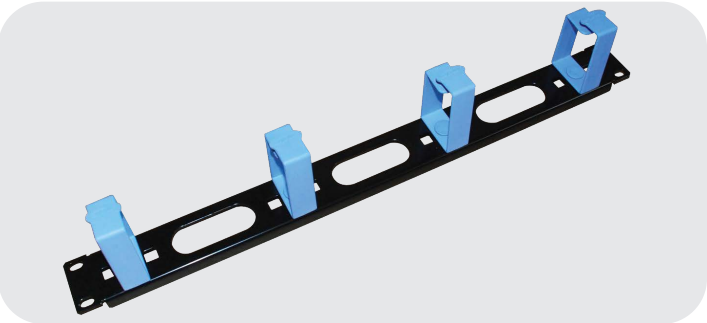
Description	Order code
M6 caged nuts kit 50 pcs.	<a href="#">VK385-776190</a>
M6 x 12 mm pozi-drive screws and cup washers kit 50 pcs.	<a href="#">VK385-776191</a>



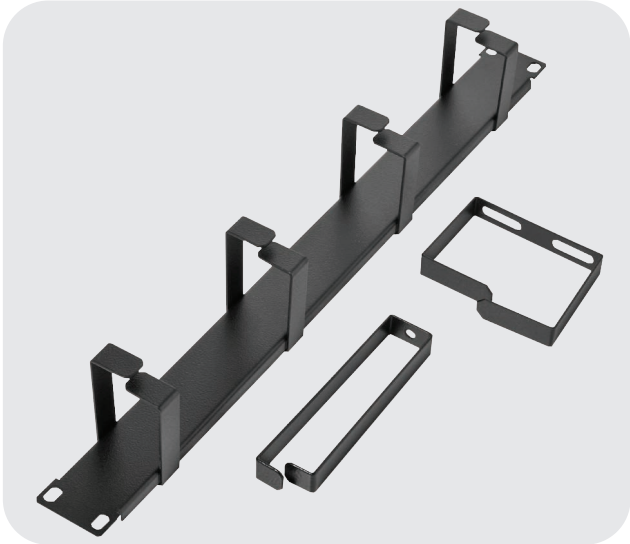
Single cable plastic hoops kit



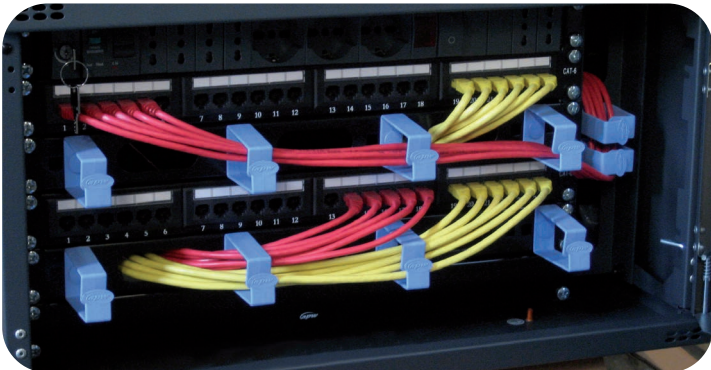
Single cable metal hoops kit



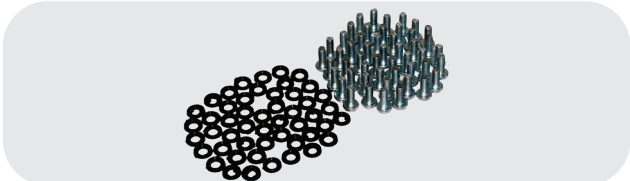
Cable management panel w/ plastic hoops



Cable management panels kit



Cable management kit



Caged nuts and fixings

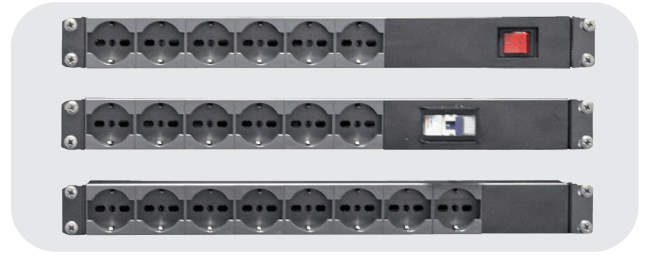
# IMLAN

## Power distribution unit

### 1U 19" RACKMOUNT MULTISTANDARD ALUMINUM PDU

2 mt cable + plug Schuko

N. sockets	A	Protection	Order code
6	16A	--	<a href="#">C06ALMST-SI2S</a>
6	16A	Illuminated switch	<a href="#">C06ALMST-IL2S</a>
7	16A	MGT 2P+N	<a href="#">C07ALMST-MT2S</a>
8	16A	--	<a href="#">C08ALMST-SI2S</a>
8	16A	Illuminated switch	<a href="#">C08ALMST-IL2S</a>

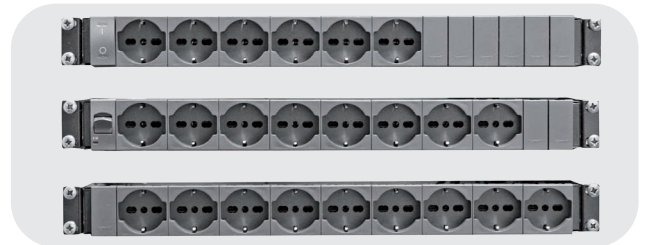


Multistandard aluminum PDU

### 1U 19" RACKMOUNT MULTISTANDARD STEEL PDU

2 mt cable + plug Schuko

N. sockets	A	Protection	Order code
6	16A	--	<a href="#">K06MET-SI2S</a>
6	16A	Illuminated switch	<a href="#">K06MET-IL2S</a>
6	16A	MGT 2P+N	<a href="#">K06MET-MT2S</a>
8	16A	--	<a href="#">K08MET-SI2S</a>
8	16A	Illuminated switch	<a href="#">K08MET-IL2S</a>
9	16A	MGT 2P+N	<a href="#">K09MET-MT2S</a>



Multistandard steel PDU

### MULTISTANDARD VERTICAL ALUMINUM PDU

2 mt cable + plug Schuko

N. sockets	A	Protection	Order code
12	16A	MGT 2P+N	<a href="#">C12ALMST-MT2S</a>
12	16A	Illuminated switch	<a href="#">C12ALMST-IL2S</a>
16	16A	Illuminated switch	<a href="#">C16ALMST-IL2S</a>
16	16A	MGT 2P+N	<a href="#">C16ALMST-MT2S</a>



Multistandard aluminum vertical PDU

### 1U 19" RACKMOUNT IEC C13 STEEL PDU

2 mt cable + plug Schuko

N. sockets	A	Protection	Order code
8	16A	Illuminated switch	<a href="#">C08MET-16AC13IECIL2S</a>
8	16A	MGT 2P+N	<a href="#">C08MET-16AC13IECMT2S</a>
12	16A	Illuminated switch	<a href="#">C12MET-16AC13IECIL2S</a>

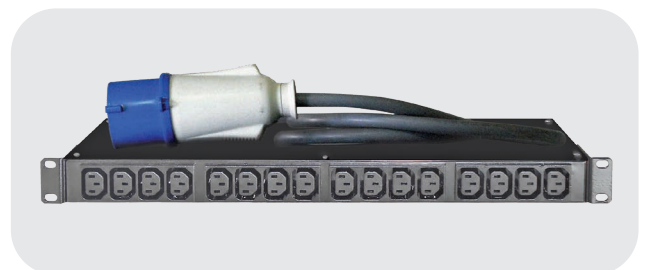


IEC C13 8/12 sockets steel PDU

### 1U 19" RACKMOUNT IEC C13 STEEL PDU

3 mt cable + plug IEC60309

N. sockets	A	Protection	Order code
16	16A	--	<a href="#">K16MET-16AC13IECIND3MT</a>
16	32A	--	<a href="#">K16MET-32AC13IECIND3MT</a>



IEC C13 16 sockets steel PDU



**GOMA ELETTRONICA SpA**

Strada Antica di Collegno, 225  
10146 Torino - Italia

Tel: +39 011 7725024

[www.apw.eu.com](http://www.apw.eu.com)

All trademarks are the property of their respective owners  
GOMA ELETTRONICA SpA • P-CTG-EN 1223

Designed by GOMA ELETTRONICA SpA



KEEP IN TOUCH

